

# YEAR 3 NEWSLETTER—AUTUMN 2

*Journeying together with God*

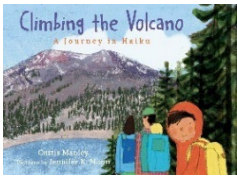


Welcome back after the half term break! We hope you all had lots of rest and are ready for another exciting half term ahead. We have got lots of exciting learning planned linked with our topic 'Why do people live near volcanoes?'. As we come closer to Christmas, we will be designing and making a Christmas cushion as well as welcoming you to our first 'Stay and Craft' event.

## THEME AND BIG QUESTION

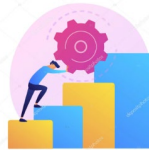
### Volcanoes

Why do people live near volcanoes?



## OUR CHRISTIAN VALUE THIS HALF TERM IS...

### PERSEVERANCE



## NOTICES



Please remember to bring your child's book bag to school **every day** and check inside for new books and notices. Please ensure that PE kits are worn for PE days, and that they are labelled with your child's name. Remember to label all items of uniform too! **Please can all children bring their water bottles with them every day and filled with water only.**

## KEY DATES

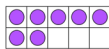
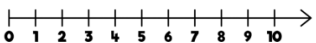


**Monday 10<sup>th</sup> - Friday 14<sup>th</sup> November** – Respect week  
**Thursday 13<sup>th</sup> November** – School DISCO 3:30 – 4:30  
**Friday 14<sup>th</sup> November** – Children in Need non-uniform day.  
**Wednesday 3<sup>rd</sup> December** – Christmas Fair 3:30 – 5:00 pm  
**Monday 15<sup>th</sup> December** – Stay and Christmas Craft 9 – 9:30 am  
**Thursday 18<sup>th</sup> December** – Carol Service 11:00 am  
**Friday 19<sup>th</sup> December** – Christmas Jumper Day and breaking up for the Christmas holiday.

## MATHS



- We will continue to use White Rose Maths planning for our learning.
- Our focus this half term is **addition, subtraction, multiplication and division**. The children will be doing lots of practical learning using place value counters.
- The children will also use a number line to add, subtract and multiply.
- They will continue to use concrete materials such as Numicon, ten frames, counters and 100 squares and times table squares to support with mathematical thinking, reasoning and problem solving.



## ENGLISH



- We be focusing on spelling in Year 3 and revisiting some of the phonics we have learnt previously, to support with spelling unfamiliar words.
- The children will begin whole class reading sessions and extra phonics support will be given to children who still need it.
- We will be reading 'Stone Girl, Bone Girl' by Laurence Anholt, as well as reading volcano poems. We will use these books to develop the children's non-fiction and poetry writing whilst also focusing on using correct grammar.
- The main genres we will focus on this half term include a haiku poem about a volcanic eruption and a biography about the famous palaeontologist Mary Anning.
- We will continue to focus on letter formation and handwriting every time we write.



**Nurture**



**Discover**



**Respect**



## SCIENCE



### Rocks and Soils

Studying rocks and their properties, children learn how to classify rocks and identify how they were formed. They look at the work of palaeontologists to learn about fossil formation and use models to explore how fossils tell us about the past. We will investigate the physical properties of rocks and link these to their particular uses. Pupils also explore soil formation, separate soil using a sedimentation jar and test soil drainage.

## RE



### Sikhism

#### What does it mean to be a Sikh in Britain today?

The children will be learning to:

- Identify who founded Sikhism.
- Identify what Sikhs believe.
- Explore the 5Ks and why they are important to Sikhs.
- Recognise the Guru Granth Sahib.
- Discuss the teachings of the Gurus.

## ONE LIFE



## PSHE – ONELIFE

We will continue our personal development journeys. The One Life programme looks at many aspects to help us live our best life.

This half term, we will be looking at:

- Response system
- Body image
- Boundaries
- Consent
- Privacy



## DT

### TEXTILES – CUSHIONS

The children will be learning a variety of different sewing techniques and then design and make their own Christmas cushion.

## PE



### 3HG and 3LG – Monday and Thursday

- There will be two PE lessons per week so please ensure PE kits are worn for those days and are fully named including trainers.
- This half term we will be focusing on Basketball and Football

## GEOGRAPHY



### Geography – Why do people live near volcanoes?

- How is the Earth constructed?
- Where are mountains found?
- Why and where do we get volcanoes?
- What are the effects of a volcanic eruption?
- What are earthquakes and where do we get them?

## COMMUNICATION



- Please ensure you check Seesaw regularly. We can give you a new log on for your child(ren) to access their Y3 online journal.
- Also, don't forget to visit our [Facebook](#), and [class webpage](#) to see all our learning in Y3 and school.



## HOME LEARNING

- Please read as much as possible with your child. Try and aim to read with your child **daily for at least 10 minutes** and make a short note in their reading diary.
- It is also important that you read to your child as much as possible too!
- Home learning will be given out every Friday and is expected to be back in school the following Wednesday. There will be a balance of English, maths and topic work throughout the year.



## Nurture



## Discover



## Respect