



# Bramley St Peter's C of E (VA) Primary School

Prospectus 2026-27

Journeying together with God

# Welcome

## **I would like to extend a warm welcome to Bramley St Peter's Primary School.**

We are a school that prides itself on nurturing the whole child, supporting every pupil on their journey through school and beyond. In an ever-changing world, we aim to prepare our children for the opportunities and challenges ahead, equipping them with the skills to be perceptive, resilient, and self-aware. Above all, we want our pupils to become the very best versions of themselves.

Our core values of Nurture, Discover, and Respect underpin our Christian ethos, with pupils placed firmly at the heart of everything we do. We celebrate each child's uniqueness and encourage them to shine - whatever that may look like for them. Inclusiveness is central to our approach: we value diversity and ensure that every child feels respected, supported, and able to succeed.

Bramley St Peter's is a warm, welcoming, and caring school, where high standards are set for all. Our dedicated staff team works hard to provide a safe, stable, and nurturing environment, where stimulating and supportive teaching enables children to flourish. Learning here is enriched through opportunities beyond the classroom — from exploring our Forest Garden to experiencing a wide range of trips and activities that inspire curiosity and a love of learning.

We are proud of our inclusive school community and invite you to discover more about the opportunities and experiences we offer at Bramley St Peter's.

**Ruth Esplin**  
Headteacher





# Our School

**At Bramley St Peter's we nurture children by providing an environment where they feel safe, loved and secure. This enables them to be well prepared for the journey ahead. We celebrate the uniqueness of every child of God and encourage them to shine.**

From this firm foundation our pupils embark on their learning journey, exploring and making discoveries along the way. We encourage each child to enjoy the adventure and challenge of learning.

Within this journey, children learn to show care, love and respect. They develop the key skills they need for their learning journey, including self-respect and sensitivity to the needs of others



## About us

Our school is a Voluntary Aided Church of England school.

The school is a two form entry and admits 60 pupils per year group. We also have a school nursery (from 3+).

We currently have around 380 pupils on our roll, which begins at nursery and runs through to year 6 (ages 3-11).

School starts at 8.45am (doors open from 8.40am for KS2) and children start the day with a set morning routine which prepares them for the day ahead. School then finishes at 3.15pm.

We offer a free and paid for Breakfast Club, along with a paid for After School Club.

# Our Early Years

## Early years covers pupils in Nursery and Reception.

**Our vision for the Early Years Foundation Stage (EYFS) at Bramley St Peter's is centred on the understanding that every child is a child of God, unique, and deserving of an enriching environment that supports their overall development. We prioritise the nurturing of the whole child, recognising that emotional, social, and cognitive growth all go hand in hand. By building strong relationships with families, we create a solid foundation to support the diverse needs of each child, helping them thrive both in their learning and their life.**

Through a range of engaging experiences, we aim to spark a lifelong love for learning. Our approach embraces challenges in both indoor and outdoor settings, encouraging children to explore, ask questions, and discover new things. We focus on developing resilience and a growth mindset, empowering our learners to see challenges as opportunities to grow.

Respect is at the heart of our community; we emphasise building positive relationships that create a warm, safe environment where children feel valued and secure. As they embark on their educational journey, we prepare them not just for school, but for all their future endeavours.

Ultimately, our EYFS vision at Bramley St. Peter's is to nurture well-rounded individuals who develop the skills, confidence, and enthusiasm for learning that will last a lifetime.





# Admission to our school

**Children are admitted into Reception in the Autumn term of the school year in which they are five. If you would like your child to start attending Bramley St Peter's from September, please look at the admissions policy.**

Should you wish to give a faith reference in support of your application, you need to complete an additional Supplementary Information Form (SIF). This is in addition to the main application form from Leeds City Council. Your SIF must be sent directly to us by the January closing date. We follow the Leeds City Council admission policy and timeline which is on the Leeds City Council Website or scan the QR code.

<https://www.leeds.gov.uk/schools-and-education/school-admissions/apply-for-a-primary-school>

**Scan for further information**



## **In year applications**

We are part of the Leeds coordinated in-year application scheme. This means you can apply for a place online using the Leeds in-year application form at Before you move schools ([leeds.gov.uk](https://leeds.gov.uk)).

You can apply for places at our school and most other Leeds schools at the same time on this form. If you have moved house, please upload evidence of the house move with the online application. You can find out what you need to provide on the above website.

We have to offer places by applying our admission policy criteria to your child's application and we will contact you with our decision about offering you a place. We will tell you our decision no later than 15 schools days from when you apply.



**Nurture  
Discover  
Respect**





# Our Curriculum and Celebration

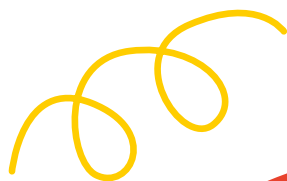
**Bramley St. Peter's is built on and driven by our core values: Nurture, Discover and Respect.**

**We serve the community by providing a happy, secure and nurturing Christian environment where all are valued and respected. We pride ourselves on being friendly and welcoming.**

We believe in the uniqueness of the individual and recognise the range of contributions that each child can make. We provide for the spiritual, emotional, physical, social and academic development of the whole child. We seek to foster self-esteem and encourage high aspirations, so everyone realises their full potential and talents. Our aim is to prepare children for their current and future world in modern Britain and global society.

We are committed to providing a broad curriculum which is relevant to the needs of our children, inspiring curiosity and a love of learning.

Our curriculum is well structured and topics have been designed to complement and build on previous learning with clear progression and links, so that in subsequent years, children will be able to explore concepts more deeply, applying their knowledge and skills in different contexts.



# Collective Worship

**The act of collective worship is an important part of our daily school routine and enables children and staff to reflect on God and the teachings of the Bible; thinking about the impact they have on their everyday lives.**

**Our aims for collective worship are to:**

- Provide opportunities for worshipping God.
  - Provide opportunities for participants to develop a closer relationship with God.
  - Encourage a sense of awe and wonder at the beauty, power and mystery of the world.
  - Encourage resilience in the face of local and global current events.
  - Encourage the development of a sense of spirituality.
  - Encourage a sense of community within and beyond the school.
  - Foster a sense of fellowship by bringing together pupils and staff to celebrate shared values in the school and in the community.
- Share experiences such as special occasions and events in relation to individual pupils within the school, to the school as a whole, or to the wider community.
  - Enable children to develop their understanding of the Christian faith and of the teachings of the Church.
  - Introduce children to the worship traditions of the Anglican Church.
  - Acknowledge, understand and respect difference and diversity, recognising that we are all unique and loved by God.
  - Enable children to consider moral issues.
  - Give time for quiet reflection, prayer and other appropriate responses.

Worship should be a positive experience for the children, which they will want to repeat and make a part of their life. They should have the opportunity to explore different approaches to Christian worship.





# Special Educational Needs (SEND/SEMH)

**At Bramley St Peter's we believe in the uniqueness of every child and seek to offer all children a broad and balanced, relevant and differentiated curriculum which provides consistency and continuity of teaching throughout the school.**

We have high expectations of all children and will seek to put support in place, when needed, at the earliest possible stage.

We recognise that children have a wide range of needs including speech, language and communication needs, cognitive difficulties, social and emotional difficulties and physical/ sensory difficulties and that their needs may change over time.

We work hard in partnership with our pupils, parents/ carers and other professionals to meet those needs.

If you a child that you believe or has diagnosed special educational needs please speak to us first before going through the admissions process. We can help to manage your expectations of what support can be put in place.

We also have a dedicated pastoral and behaviour support teams who also support our children and families.

**Our website has detailed information**  
<https://www.bsp.leeds.sch.uk/send/>



# Uniform

- A Red sweatshirt\* or cardigan\*  
- preferably with the school logo
- Grey trousers, shorts, skirt or pinafore dress
- White polo shirt (with collar)
- White/grey socks
- Plain black shoes or black trainers (anything with a heel is not appropriate in the school building). Shoes and trainers should be **ALL** black. Please note that coloured stripes or laces on shoes/trainers do not meet the uniform requirements
- Red checked or striped dress (optional for summer term)
- PE kit
- Pumps (indoor only) or trainers
- Black shorts or jogging bottoms
- Red t-shirt - preferably with the school logo\*
- Draw string bag for PE kit

## General rules

1. Jewellery is not necessary in school and therefore is not permitted. However, children may wear a watch and those children with pierced ears may wear small plain studs.
2. Long hair should be tied back with an appropriately coloured (red, white or black) bobble. All other hair accessories should be appropriately coloured too.
3. Extreme hair styles are not suitable and are strongly discouraged.
4. Nail varnish should not be worn in school.



Our uniform  
can be purchased  
in school or from  
Whittakers Uniforms,  
Pudsey



# School Meals and Healthy Choices

**School meals are provided through Leeds Catering Service and all meals are prepared and cooked in our school kitchen.**

The choice of meals offered meet the latest Government standards of quality and nutritional content. The meals include a vegetarian/ vegan, meat and halal options. We also provide meals for pupils with other specific dietary requirements. Our menu operates on a 3 week cycle and changes half way through the school year.

The children are then given a coloured band to take into the dinner hall each day which corresponds to the choice they have made. The school menu is also available to view on the school website.

Parent/carers are also welcome to send their child to school with a packed lunch. If you are sending a packed lunch, we ask that you follow the Packed Lunch Policy.

Please also note that we are a nut free school and therefore no nut products should be included in packed lunches.

School meals are served through a staggered sitting system from 11.45 until 1.00pm. We believe that lunchtime is a social occasion and encourage pupils to speak politely to staff and each other, to sit sensibly with their friends and eat all of their lunch.

Our lunchtime supervisors encourage all pupils to try new foods and ensure lunchtimes are safe and enjoyable for all pupils.



# Clubs and Wraparound care

At Bramley St Peter's we offer wrap around care for our pupils (Nursery to Year 6), providing parents/ carers with the option of childcare both before and after school. We have 3 clubs available.

## Early Bird Breakfast Club (EBC)

- This operates from 7.30am-8.40am and is a paid for service at £4.50 per session.

Children are offered a healthy breakfast and then they have the opportunity to spend time with their friends, play games or be a little more active in the gym.

## Free breakfast Service (FBC)

- This is a Government backed free breakfast service that operates from 8.15am-8.45pm.

Children are offered a healthy breakfast and then they are taken to their classrooms ready for the start of the school day.

## After school club (ASC)

We offer a childcare service after school that runs until 6pm. There are 3 tariffs.

- Up to 4pm - £5 charge (no snack)
- Up to 5pm - £10 charge with snack
- Up to 6pm - £12 charge with snack

All of the paid clubs need to have a place reserved online via our Parent Pay club app.

## Curriculum Clubs

We run a number of other clubs during the school day and after school which range from basketball, coding, arts and crafts, dance, singing, athletics and many more.





# Clubs, Community and Activities

**An important part of school life is all the extra activities that take place in and around the curriculum.**

Our year 4 pupils attend Bramley Baths as part of their PE curriculum.

Across the year groups there are a range of clubs and activities that take place during, after school and at lunchtimes:

- Bramley Olympics
- Skipping festival for Y2 and Y4
- Chess Club and competition (all ages)
- Arts and crafts clubs
- Dance club
- Coding club (Y4-6)
- Drama club
- Football and Rugby Clubs
- Basketball
- Boxing
- Creative writing
- Eco club
- Children's Youth Summit (Y6)
- Leeds Rhinos—sing and dance spectacular at Headingley Stadium

**Twice in the school year we hold our very popular school disco and in December we have our very own winter grotto in our Forest Garden.**



# Parental Engagement

**We understand how vital our parents, carers and other relatives are to supporting our school activities.**

We engage as much as possible hosting events throughout the year where we invite you into school. If you would like to volunteer or help at any event please let the school office know.

**We invite you to join us at:**

## Church Services

Harvest, Christmas, Lent and Easter Services at either Bramley St Peter's Church or Bramley Baptist Church.

## Stay and participate

We host stay and join in activities every half term for parents/ carers to come into the classroom and undertake an activity with the children.

## Family breakfasts

We invite families to join us for a healthy breakfast before the start of school (by year group). Its an ideal opportunity for siblings, friends and family to spend some social time together, meet the teachers and staff and enjoy a healthy breakfast.

## Communicating with Parents and Carers

We welcome interaction and feedback where possible or necessary and we use a range of methods to communicate with our families:

- **Seesaw**  
Our main messaging and homework app
- **Website**  
We post all of our school information including policies, calendar, school menus etc
- **Newsletter**  
We have a fortnightly newsletter which is shared on the website and Seesaw
- **Social Media**  
Facebook, X and Instagram
- **In Person**  
Our SLT team are always at the 3 entry doors on a morning or call in at the school office







# Contact us

Bramley St Peter's Church of England  
Voluntary Aided Primary School  
Hough Lane  
Leeds  
West Yorkshire  
LS13 3NE

**To contact the main school office (Mrs D Leak):**

Phone: 0113 2559680  
Email: [info@bsp.leeds.sch.uk](mailto:info@bsp.leeds.sch.uk)

